

28

This is a powerful, efficient offshore fishing vessel, loaded with big boat features that make 40 footers envious. She's a machine totally designed and precisely built for one purpose: Offshore trophy fishing. Fast and dry. Plenty of working room, storage, bait and fish boxes. Because fishing conditions vary, we offer a combination of twin engine diesel power packages, with long-range fuel capacity for all. Plenty of living room, too. A cabin with six feet of head room. V-berth with filler. Galley with microwave, sink, refrigerator and table. Full walk-in electric head with shower, and storage areas throughout.

Redundant systems. Amazing speed. Thick skin. And a lethal punch. Everything serious fishermen demand.



CAROLINA CLASSIC 28 SPECIFICATIONS

L.O.A: 28'5"

Beam: 10'6"

Deadrise: 24°

Draft: 30"

Fuel Capacity: 256 gal.(gas) 200 gal.(diesel) 256 gal. (diesel with long range fuel capacity)

Water Capacity: 30 gal.

Height from waterline: Windshield 7'0", Tower 12'0"

Power: Diesel: up to 315 hp.

Gas: Crusader 6.0 375 hp

Drive: Conventional Inboard

Weight: 13,500 lbs dry

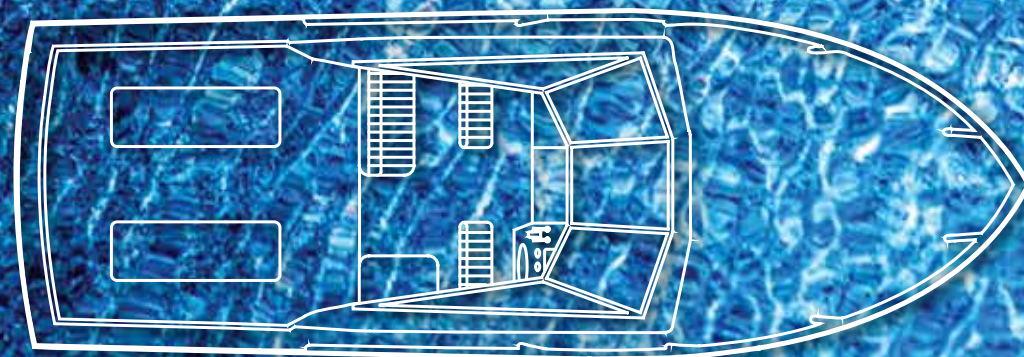
INBOARD ENGINE OPTIONS

CRUSADER 6.0 375HP

D4 260 VOLVO

D4 300 VOLVO

YANMAR 8LV 320





ELECTRICAL

- AC/DC electrical distribution panel
- Battery paralleling switch
- Batteries, heavy-duty marine (3)
- Bonded electrical system
- Circuit breaker protected throughout
- Tinned coated copper color-coded wiring system
- LED lighting
- High Water Alarm
- Navigation lights, LED
- Receptacles 110V duplex, GFI
- 30 AMP shore power w/cord

MECHANICAL

- Acoustic and thermal insulation
- Bilge pumps (3) w/ indicator lights
- Bilge, high gloss enamel easily cleaned
- Double stainless steel hose clamps below waterline
- Drive shafts (aquamet 22)
- Engine alarm system
- Engine hatch lift (hydraulic)
- Fire extinguisher, halon, automatic
- Fuel filter/water separators
- Fuel line, flexible
- Fuel tanks, Marine aluminum
- Rub rail (stainless insert)
- Rudders, SS (inboard)
- Seacocks on all thru-hulls below waterline
- Seawater intake strainer, heavy-duty bronze
- Struts, heavy duty bronze
- Stuffing boxes, bronze, dripless
- Transmissions, hydraulic
- Transom zincs, fully bonded
- Vibration-absorbing engine mounts
- Water system, pressurized

HELM STATION

- Compass
- Dash capable of flush mounting two 12" displays
- Dual controls
- Electronics compartment, dash, flush mount
- Helm & companion chair
- Stainless steel steering wheel
- Trim tab switches
- Engine and vessel instrumentation
- Weather-protected switches and instruments
- Windshield w/opening vents, wipers



(804) 776-9898



HEAD

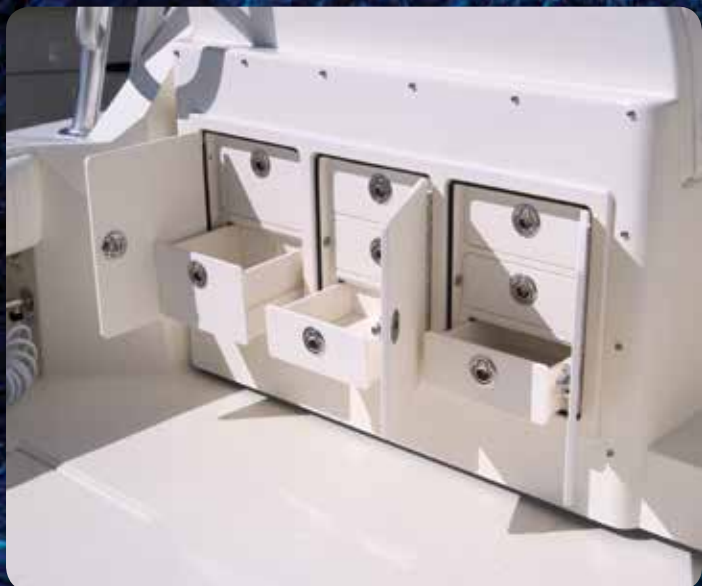
- Electric head w/holding tank and Y-valve
- Floor, non-skid surface
- Medicine cabinet
- Mirror
- Receptacle, 110V GFI
- Shower, pressurized
- Shower sump
- Sink with countertop
- Storage cabinets
- Towel rack

OPTIONAL EQUIPMENT

- Battery charger
- Coaming pads, aft cockpit
- Glendinning Electronic Controls
- Freshwater cooling engines
- Generator
- Hanging bunks in cabin
- Hardtop or tower with enclosure
- HVAC with electric digital control
- LED spreader lights on tower
- Live bait well on transom
- Long range fuel tanks (diesel)
- Tuna tower and weather enclosure w/ electronic controls, compass and electronics box (includes tachs, horn, seat)
- Rocket launcher on tower legs
- Corian Countertops
- Teak & Holly Sole
- Swim platform, fiberglass
- TV inlet and jack
- Windlass with roller

COCKPIT

- Cockpit lighting, indirect
- Dockside electric hookup
- Freshwater washdown
- Rod holders (4)
- Rod racks under gunwale
- Saltwater washdown
- Scuppers w/flaps
- Self-bailing cockpit
- Storage areas
- Tackle cabinet/seat





CABIN

- Bomar hatch
- Counter top
- Drawers and storage
- Galley sink
- Microwave oven
- Refrigerator, AC/DC
- Rod Racks
- Table, removable
- V-berth lounge w/cushions, filler, storage

MISCELLANEOUS

- Anchor locker, bow access
- Deck, diamond non-skid
- Deck hardware, stainless steel, thru-bolted
- Dual air horns
- Helm seating for 5
- 2 bow cleats
- 2 hawse pipes
- 2 spring line cleats
- 2 stern cleats
- 2 bow chocks
- Stainless steel bow rail



(804) 776-9898